



# Rivers Townland, Co. Limerick

- English
- Gaeilge (/ga/limerick/clanwilliam/ballyvarra/rivers/)
- Deutsch (/de/limerick/clanwilliam/ballyvarra/rivers/)
- français (/fr/limerick/clanwilliam/ballyvarra/rivers/)

Search for a townland, civil parish, barony

(/)

Co. Limerick (/limerick/) → Clanwilliam (/limerick/clanwilliam/) → Ballyvarra Electoral Division (/limerick/ballyvarra/) → Rivers (/limerick/clanwilliam/ballyvarra/rivers/)

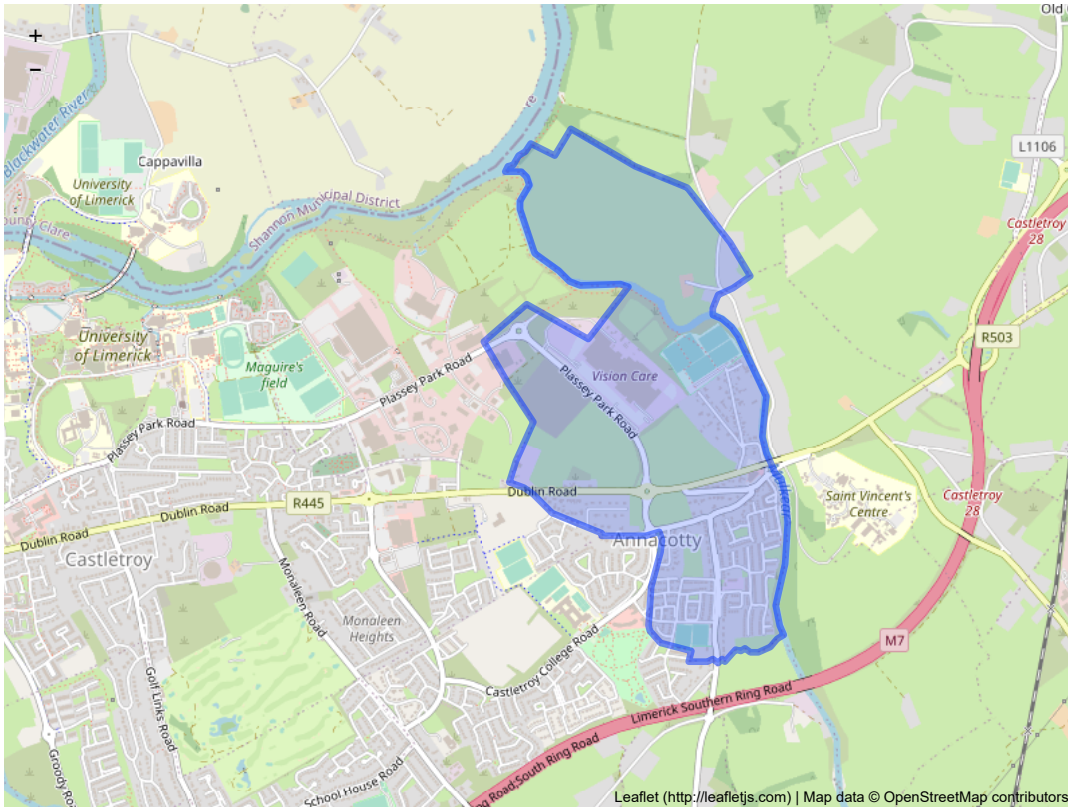
- [Map](#) ↓
- [Area](#) ↓
- [Bordering Townlands](#) ↓
- [Subtownlands](#) ↓
- [Records Search](#) ↓
- [OpenStreetMap](#) ↓

Rivers is in the Electoral Division of Ballyvarra (/limerick/ballyvarra/). We don't know what Civil Parish Rivers is in. Rivers is in the Barony of Clanwilliam (/limerick/clanwilliam/). Rivers is in Co. Limerick (/limerick/)

Rivers is not matched up to Logainm.ie yet.

## Map

It is located at 52° 40' 18" N, 8° 32' 11" W.



## Area

Rivers has an area of:

- 1,768,408 m<sup>2</sup> / 176.84 hectares / 1.7684 km<sup>2</sup>
- 0.68 square miles
- 436.98 acres / 436 acres, 3 roods, 37 perches

Nationwide, it is the 14118th largest townland that we know about

Within Co. Limerick, it is the 493rd largest townland

## Borders

Rivers borders the following other townlands:

- Ballyclogh (/limerick/clanwilliam/kilmurry/ballyvarra/ballyclogh/) to the south
- Ballyvollane (/limerick/clanwilliam/stradbally/ballyvarra/ballyvollane/) to the north

- Castletroy (/limerick/clanwilliam/kilmurry/ballyvarra/castletroy/) to the west
- Garraunykee (/limerick/clanwilliam/ballyvarra/garraunykee/) to the east
- Newcastle (/limerick/clanwilliam/kilmurry/ballysimon/newcastle/) to the west
- Newtown (/limerick/clanwilliam/kilmurry/ballysimon/newtown/) to the south
- Woodstown (/limerick/clanwilliam/killeenagarraiff/ballyvarra/woodstown/) to the east

## Subtownlands

We don't know about any subtownlands in Rivers.

## Genealogy / Ancestry / Records Search

Curious to see who lived in Rivers in the past? Maybe even seeing scans of their handwritten census returns?

- Search the 1911 Irish Census for Rivers ([http://www.census.nationalarchives.ie/search/results.jsp?census\\_year=1911&county19011911=Limerick&townland=Rivers&ded=Ballyvarra&search=Search](http://www.census.nationalarchives.ie/search/results.jsp?census_year=1911&county19011911=Limerick&townland=Rivers&ded=Ballyvarra&search=Search))
- Search the 1901 Irish Census for Rivers ([http://www.census.nationalarchives.ie/search/results.jsp?census\\_year=1901&county19011911=Limerick&townland=Rivers&ded=Ballyvarra&search=Search](http://www.census.nationalarchives.ie/search/results.jsp?census_year=1901&county19011911=Limerick&townland=Rivers&ded=Ballyvarra&search=Search))
- Search Griffith's Valuation (1847-1864) for Rivers (<http://www.askaboutireland.ie/griffith-valuation/index.xml?action=doPlaceSearch&Submit.x=51&Submit.y=16&Submit=Submit&freetext=Rivers&countyname=Limerick&baronynome=Clanwilliam&unionname=&parishname=>)

## OpenStreetMap

Rivers was added to OpenStreetMap on 4 Jul 2016 by NoelB.

### View

[View on OpenStreetMap.org \(https://www.openstreetmap.org/relation/6385062\)](https://www.openstreetmap.org/relation/6385062)

[Show Changes \(https://pewu.github.io/osm-history/#/relation/6385062\)](https://pewu.github.io/osm-history/#/relation/6385062)

### Edit

[JOSM \(http://localhost:8111/iimport?url=http://api.openstreetmap.org/api/0.6/relation/6385062/full\)](http://localhost:8111/iimport?url=http://api.openstreetmap.org/api/0.6/relation/6385062/full)

[iD \(https://www.openstreetmap.org/edit?editor=id&relation=6385062\)](https://www.openstreetmap.org/edit?editor=id&relation=6385062)

[Potlatch \(https://www.openstreetmap.org/edit?editor=potlatch2&relation=6385062\)](https://www.openstreetmap.org/edit?editor=potlatch2&relation=6385062)

[Level0 \(http://level0.osmz.ru/?url=relation/6385062\)](http://level0.osmz.ru/?url=relation/6385062)

[© Copyright \(/page/copyright/\)](/page/copyright/) | [Download Data \(/page/download/\)](/page/download/) | [How up-to-date is Townlands.ie? \(/page/data\\_freshness/\)](/page/data_freshness/) | [Who's mapping townlands? \(/mappers/\)](#) | [Townland mapping activity \(/progress/activity/\)](/progress/activity/) | [Townland Index \(/index/\)](/index/) | [Help add Logainm data to OSM \(/static/logainm/\)](/static/logainm/) | [Maps \(/page/maps/\)](/page/maps/) | Last update: Sept. 12, 2021, 8:01 a.m.